

Newport East Health and Wellbeing Centre

Canolfan Iechyd a Lles Dwyrain Casnewydd

Aneurin Bevan University Health Board / Bwrdd Iechyd Prifysgol Aneurin Bevan

Aneurin Bevan University Health Board is building a new integrated Health & Wellbeing Centre which will open in early 2025.

Our aim is to offer better access to services; improve health and wellbeing and build a positive future for families in Newport East.

Mae Bwrdd Iechyd Prifysgol Aneurin Bevan yn adeiladu Canolfan Iechyd a Lles newydd a fydd yn agor yn gynnar yn 2025.

Ein nod yw cynnig gwell mynediad at wasanaethau; gwella iechyd a lles, a chreu dyfodol cadarnhaol ar gyfer teuluoedd Dwyrain Casnewydd.

“Combining capital investment to deliver community regeneration and a new model of primary care.”

The new development will be at the heart of the community in Newport East. The combined health and wellbeing team will be based close to the existing Ringland Health Centre and will include:

Bydd y datblygiad newydd yng nghanol y gymuned yn Nwyrain Casnewydd. Bydd y tîm iechyd a lles wedi'u lleoli'n agos at Ganolfan Iechyd Ringland presennol ac yn cynnwys:

- Your GP/ Eich Meddyg Teulu
- Your Dentist/ Eich Deintydd
- Sexual Health/ Iechyd Rhywiol
- Dieticians/ Deietegwyr
- Your Midwife/ Eich Bydwraig
- Memory Assessment Services/ Gwasanaethau Asesu'r Cof
- Flying Start/ Dechrau'n Deg
- District Nursing/ Nyrsys Ardal
- Speech and Language Therapy/ Therapi Lleferydd ac Iaith
- Podiatrist (Feet)/ Podiatrydd (Traed)
- Audiology (Hearing)/ Awdioleg (Clyw)
- Direct Access Physiotherapy/ Ffisiotherapi Mynediad Uniongyrchol
- Health Visiting/ Ymwelwyr Iechyd
- Primary Care Mental Health/ Gofal Iechyd Meddwl Sylfaenol
- School Nursing/ Nyrsys Ysgol



Approach to the Site / Mynediad i'r safle

Site Masterplan / Prif Gynllun y Safle



In order to achieve a direct link to the community hub, the building is proposed on the site of the existing health centre.

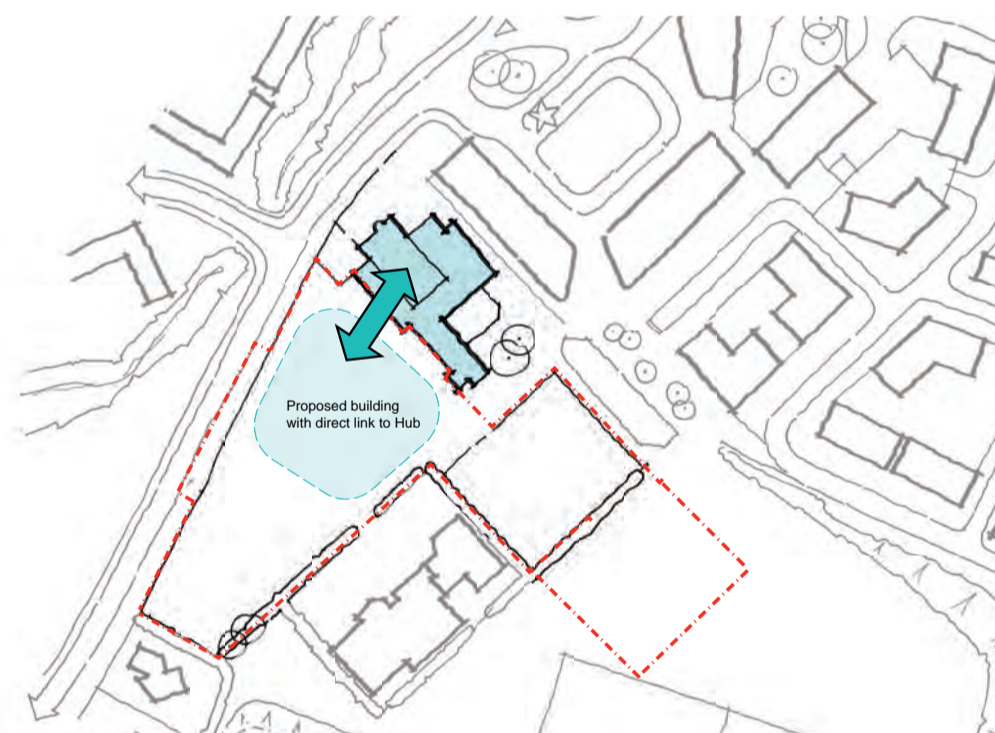
Parking is accommodated at the rear on the remainder of the site and on the existing MUGA, which is to be relocated as improved community facility next to the existing playing fields.

The layout aims to improve and strengthen the pedestrian links to the proposed retail centre by providing passive overlooking and active frontages to both the front and the rear.

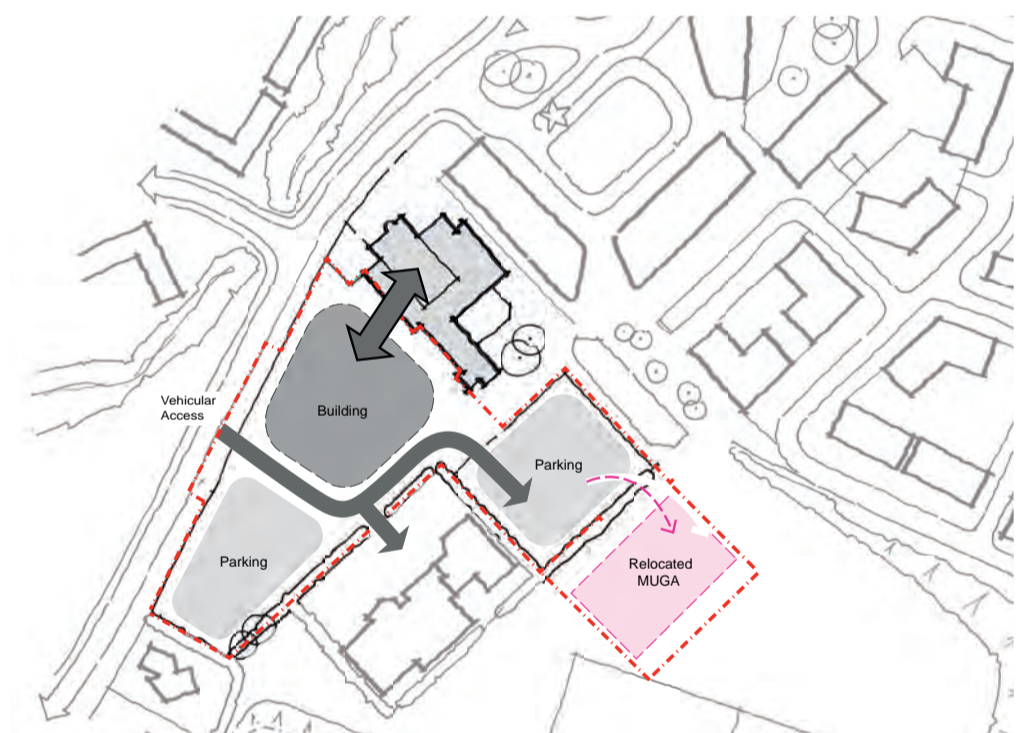
Er mwyn creu cysylltiad uniongyrchol â'r hwb cymunedol, bwriedir gosod yr adeilad ar safle'r ganolfan iechyd gyfredol.

Mae parcio yn y cefn ar weddill y safle ac ar y MUGA cyfredol, a gaiff ei adleoli fel cyfleuster cymunedol newydd a gwell wrth ymyl y caeau chwarae cyfredol.

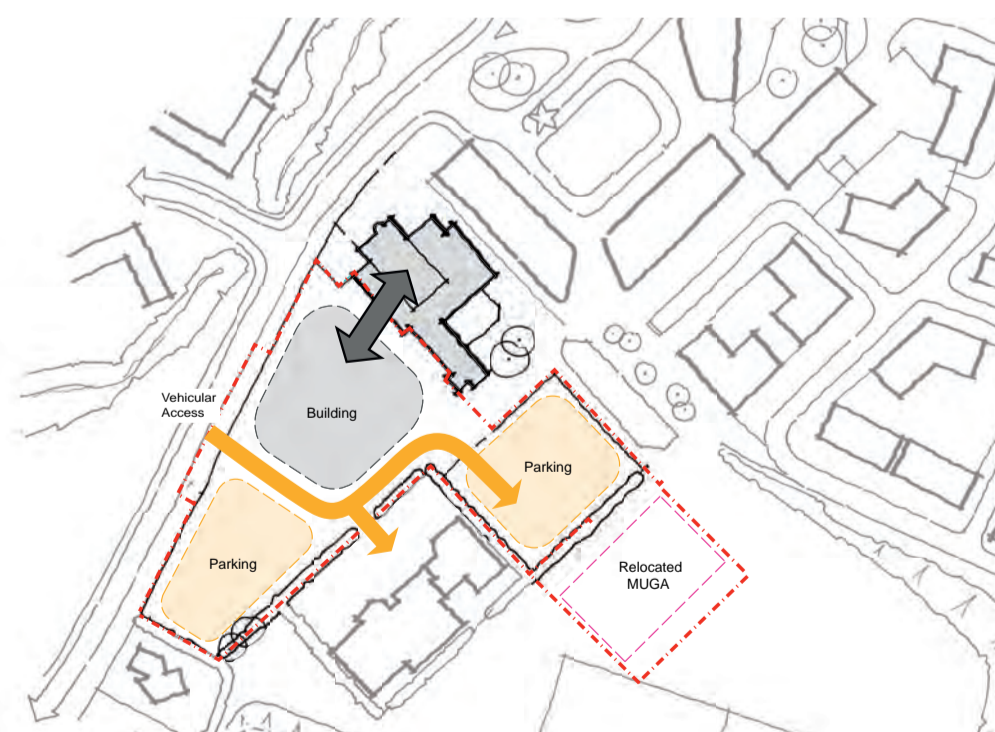
Nod y gosodiad yw gwella a chryfhau'r cysylltiadau i gerddwyr i'r ganolfan manwerthu arfaethedig trwy ddarparu talwynebau goddefol a gweithredol yn y blaen a'r cefn



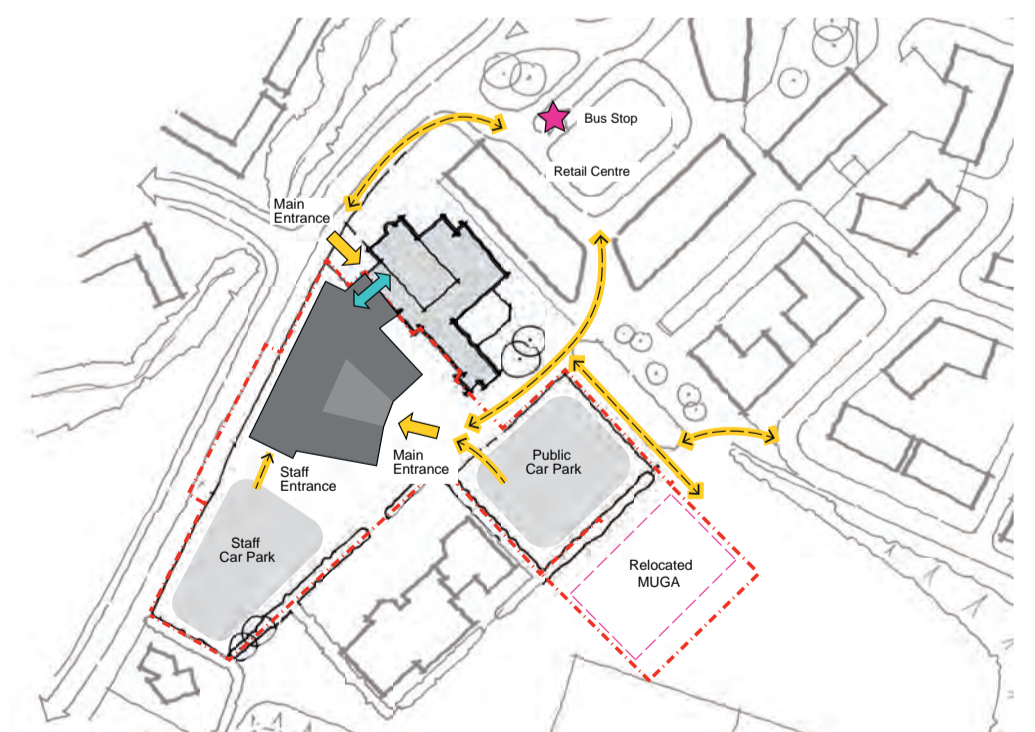
Direct Link to Hub



Relocated MUGA



Vehicular Access



Pedestrian Movement

The Building / Yr Adeilad

Floor Plans / Cynlluniau Llwr

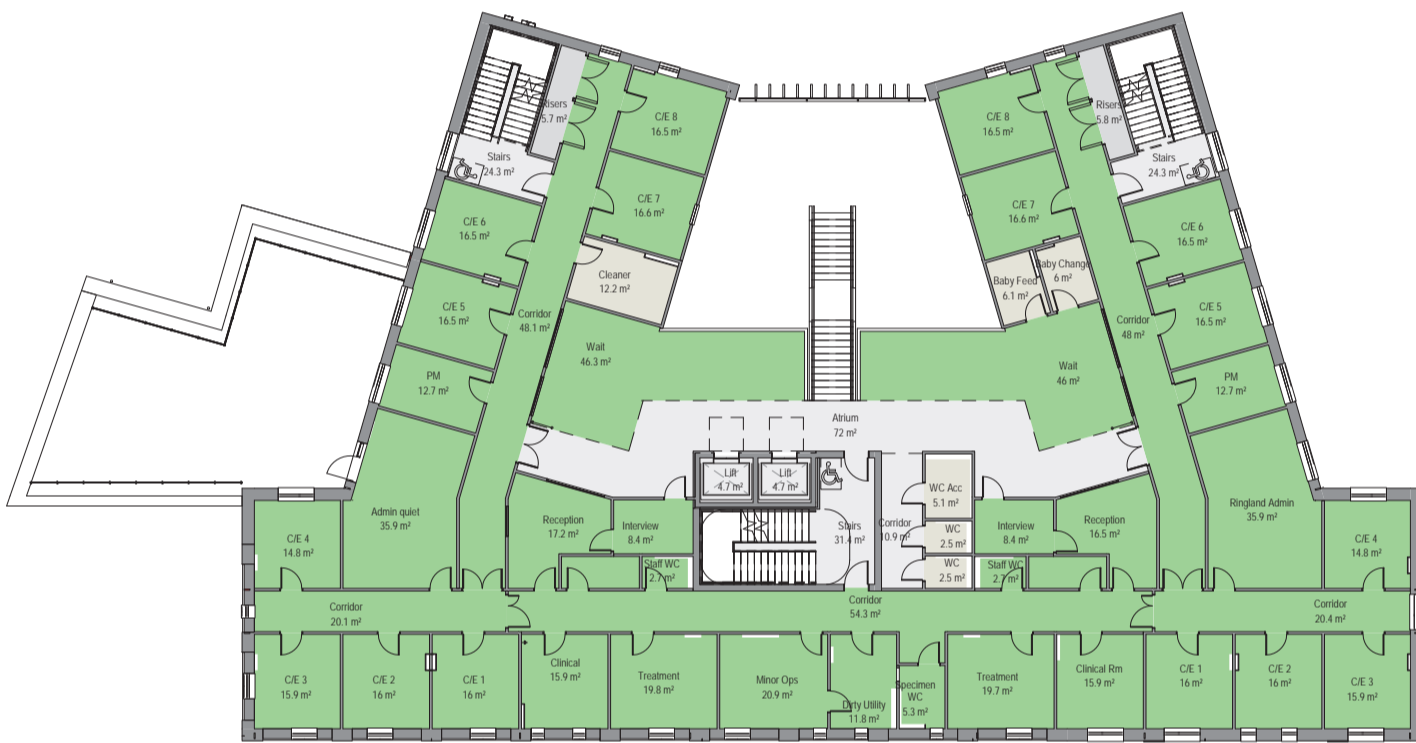


Second Floor/ Ail lawr

not to scale

Ringland Dental Centre is located on the second floor, together with staff accommodation such as changing facilities, agile working environment and common room with kitchen.

Mae Canolfan Ddeintyddol Ringland wedi'i leoli ar yr ail lawr, ynghyd â chyfleusterau staff fel ystafell newid, swyddfa gwaith ystwyth ac ystafell gyffredin gyda chegin.

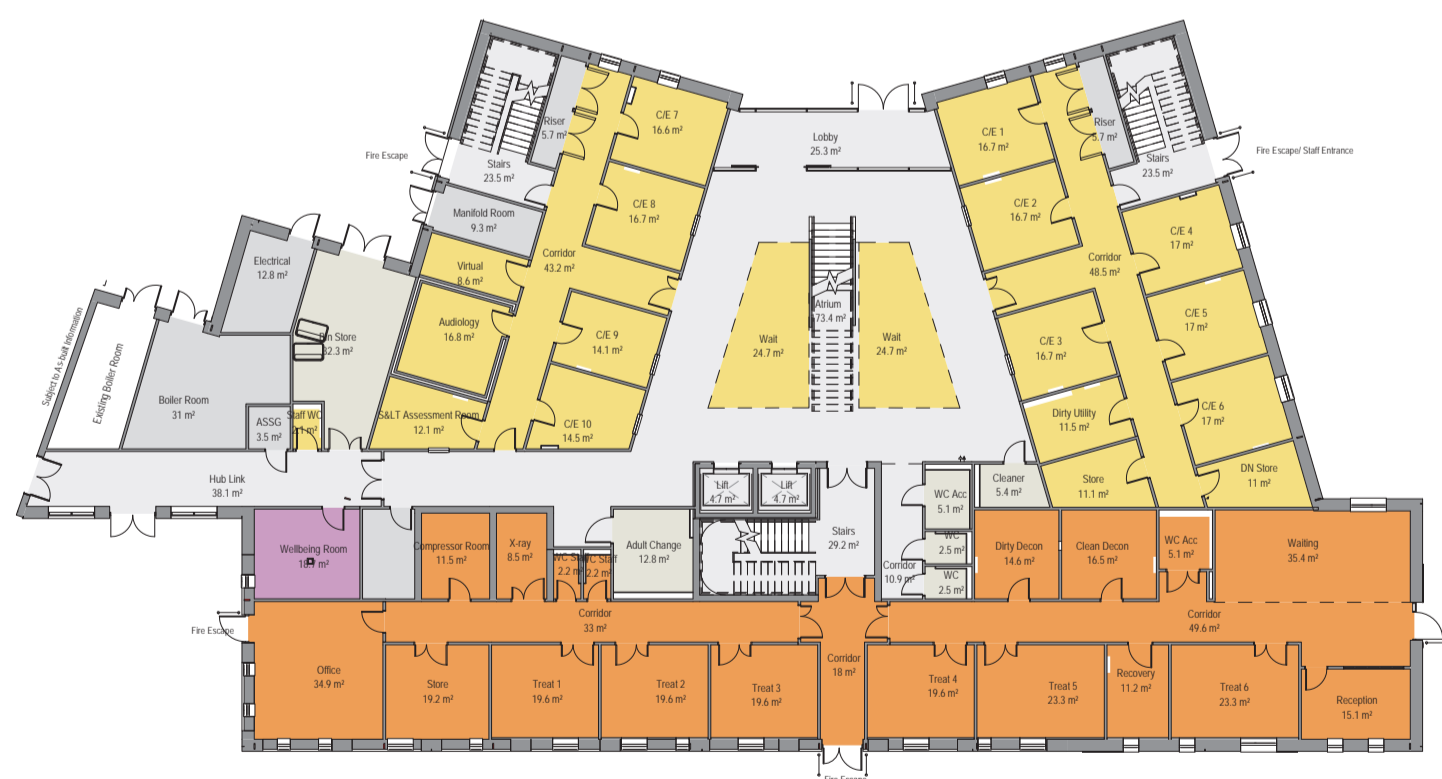


First Floor/ Llawr Cyntaf

not to scale

The first floor, which is easily accessible via lifts and a feature stair case, accommodates two GP practices including shared office and treatment areas as well as the primary care mental health units.

Mae'r llawr cyntaf, y gellir ei gyrraedd yn hwylus gan ddefnyddio'r lifft neu'r grisiau, yn cynnwys dwy feddygfa Meddyg Teulu ag ardaloedd swyddfa a thriniaeth, yn ogystal ag unedau gofal sylfaenol iechyd meddwl.



Ground Floor / Llawr Gwaelod

not to scale

The building is entered via a welcoming and light atrium which is linked to the existing Community Hub, facilitating integrated services and free movement between the two buildings. Wellbeing Rooms are located close to the hub to allow for out of hours community access, and Community Dental and Health Board Services are provided on the ground for ease of access and activity.

Mae gan y brif fynedfa atriwm croesawgar sydd wedi'i gysylltu â'r Hwb Cymunedol presennol, sy'n hwyluso gwasanaethau integredig a symudiad rhwydd rhwng y ddau adeilad. Mae'r Ystafelloedd Lles yn agos at yr hwb er mwyn caniatáu mynediad cymunedol y tu hwnt i oriau swyddfa. Lleolir Gwasanaethau'r Bwrdd Iechyd a Deintyddiaeth Gymunedol ar y llawr gwaelod er mwyn hwylustod i bawb.

Artist Impression / Delwedd Artist



In Partnership with: / Mewn Partneriaeth â:



GIG
CYMRU
NHS
WALES

Bwrdd Iechyd Prifysgol
Aneurin Bevan
University Health Board